

dipTM

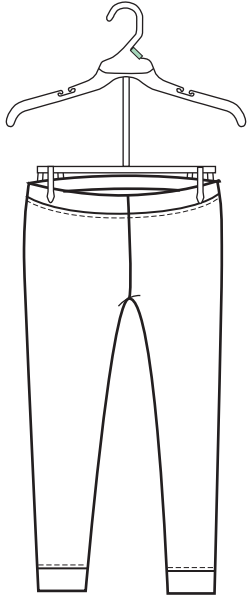
**HANGING, FOLDING
& PACKING GUIDE**

VERSION 3.1
MAY 2, 2018

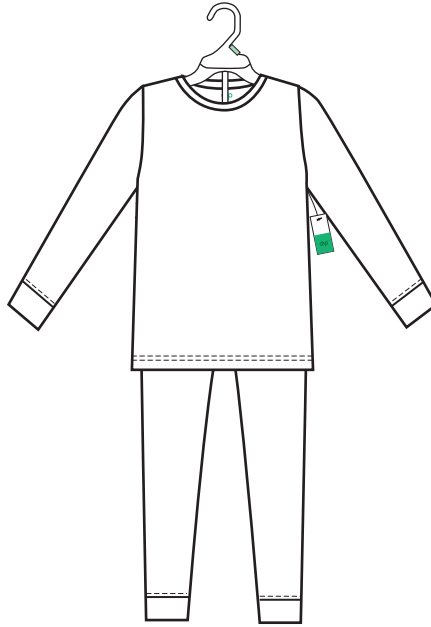
<h1 style="margin: 0;">TABLE OF CONTENTS</h1> <p style="margin: 0;">VERSION 3.1</p>

2 PIECE HANGING SETS -----	2
ADULT HANGER LOOPS -----	3
CHILDREN'S HANGER LOOPS -----	4
CHILDREN'S ROBE HANGING -----	4
HANGING STYLES- PACKING -----	5-8
FOLDED TOPS & SWEATERS -----	9
FOLDED BOTTOMS -----	10
FOLDED HOODIES -----	11
FOLDED ONESIES/BODYSUITS -----	12
FOLDING DIMENSIONS- BABY -----	13
FOLDING DIMENSIONS-TODDLER -----	14
FOLDING DIMENSIONS- ADULTS -----	15-16
SCARF FOLDING -----	17
TISSUE PAPER ADDITION REQUIREMENTS -----	18
POLYBAG WARNING REQUIREMENTS -----	19
PRE-PACK/STORE PACK CARTON PACKING -----	20
STANDARD CARTON PACKING -----	21

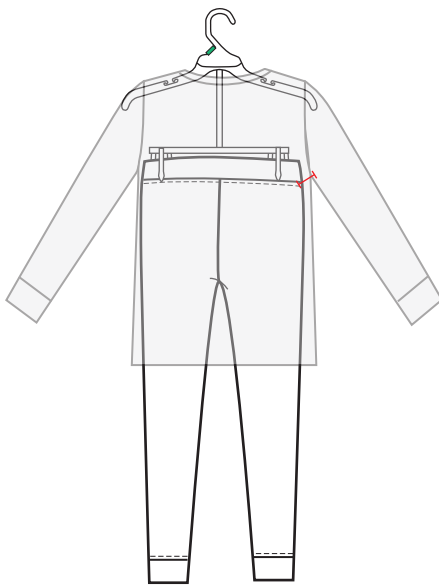
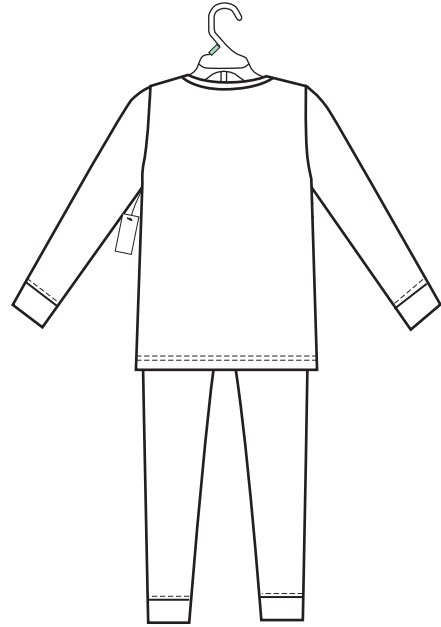
2 PIECE HANGING SETS



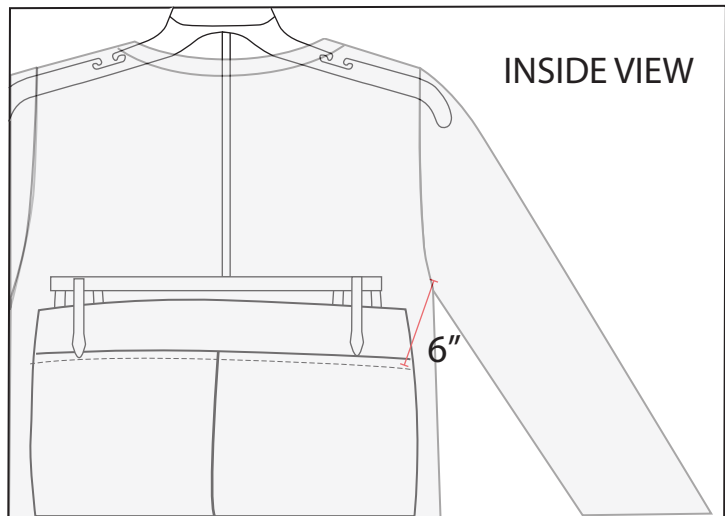
CLIP PANTS ONTO
BOTTOM HANGER



HANG TOP ON TOP HANGER OVER THE
PANTS AND BOTTOM HANGER



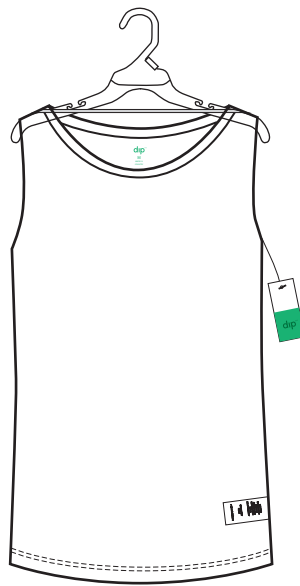
ATTACH PANT TO TOP WITH A
6" SWIFT TAG. ATTACH TO WAIST SIDE
SEAM AND TO UNDERARM SEAM ALLOWANCE



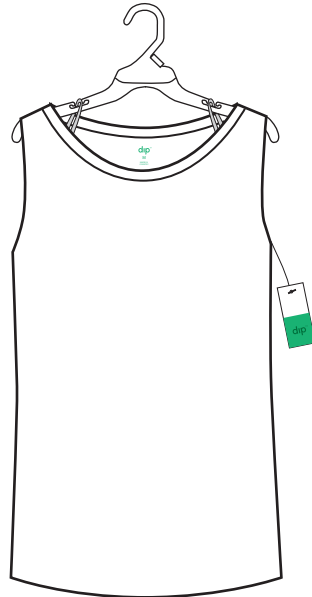
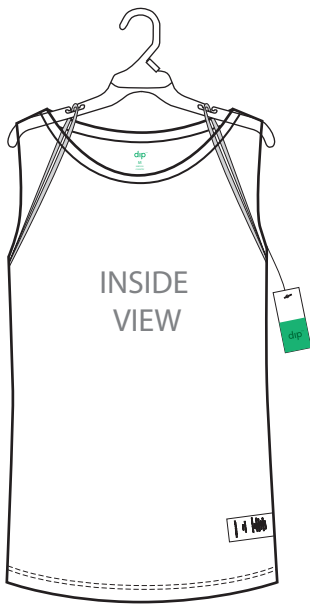
ADULT HANGER LOOPS



SHOULDER SEAM LOOPS
ATTACHED TO INSIDE SHOULDER
SEAMS AND LOOPED AROUND
HANGER HOOKS

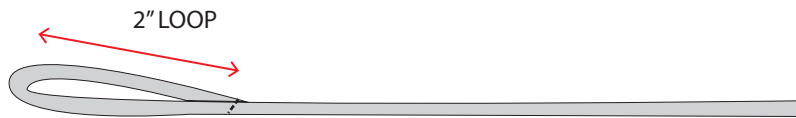
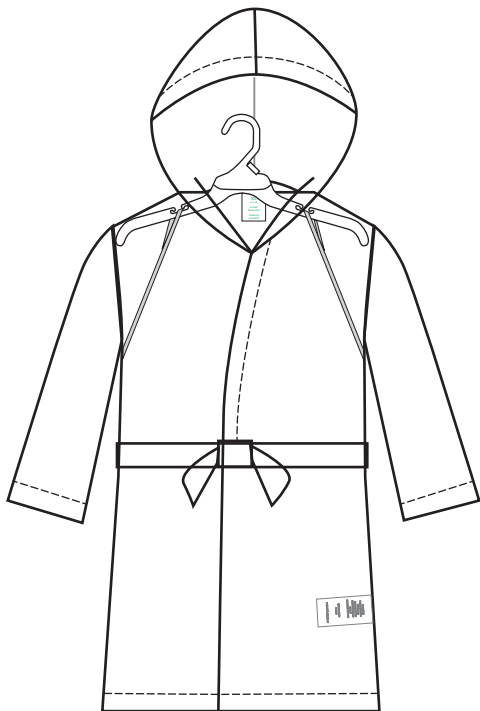


STRAIGHT ACROSS RIBBON



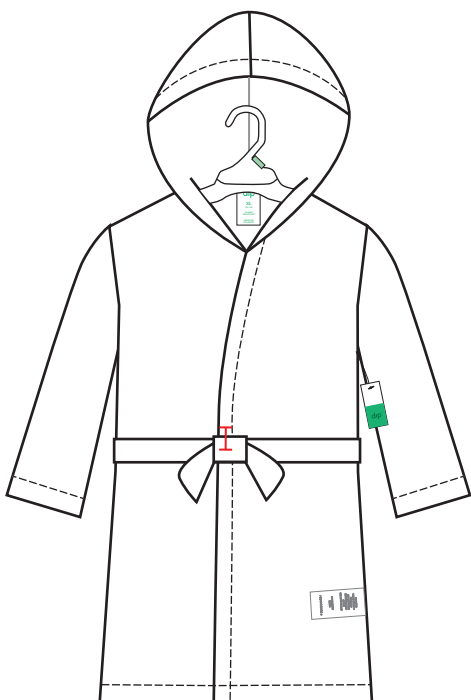
ARMHOLE LOOPS

CHILDREN'S HANGER LOOPS



HANGER LOOP STYLE- SINGLE RIBBON WITH 2" SEWN LOOP

CHILDREN'S ROBE HANGING

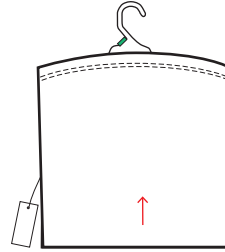
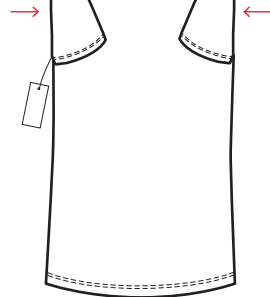
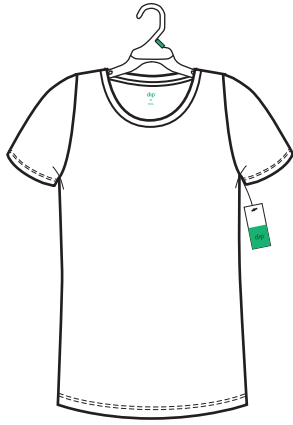


LOOP HANGER LOOPS AROUND HANGER HOOKS
SWIFT TAG KNOT TO CF BODICE SO IT DOES NOT
HANG LOOSE

HANGING STYLES- PACKING

TEES, TANKS, SHIRTS, SWEATERS & JACKETS

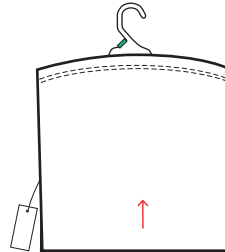
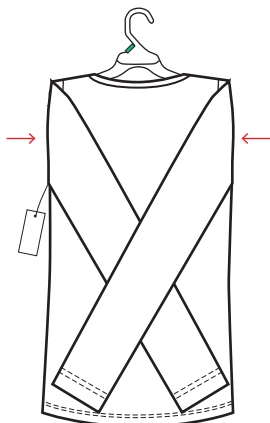
FOLD SLEEVES BACK AND FOLD GARMENT IN HALF BEFORE ADDING TO CARTON



LAY GARMENT FACE DOWN AND FOLD SLEEVES BACK OVER BODY

FOLD HEM UP SO GARMENT IS FOLDED IN HALF

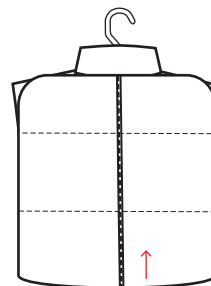
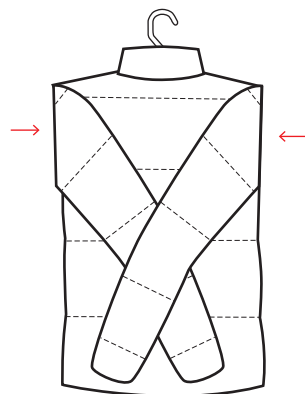
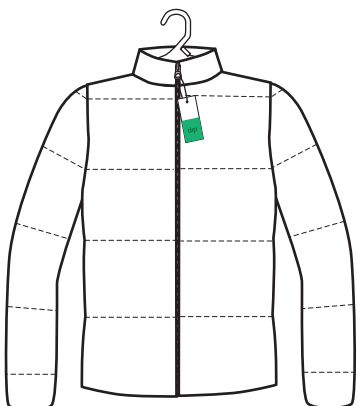
TURN GARMENT OVER TO BE FACE UP AND MAKE SURE HANGTAG IS VISIBLE



LAY GARMENT FACE DOWN AND FOLD SLEEVES BACK OVER BODY

FOLD HEM UP SO GARMENT IS FOLDED IN HALF

TURN GARMENT OVER TO BE FACE UP AND MAKE SURE HANGTAG IS VISIBLE



LAY GARMENT FACE DOWN AND FOLD SLEEVES BACK OVER BODY

FOLD HEM UP SO GARMENT IS FOLDED IN HALF

TURN GARMENT OVER TO BE FACE UP AND MAKE SURE HANGTAG IS VISIBLE

HANGING STYLES- PACKING

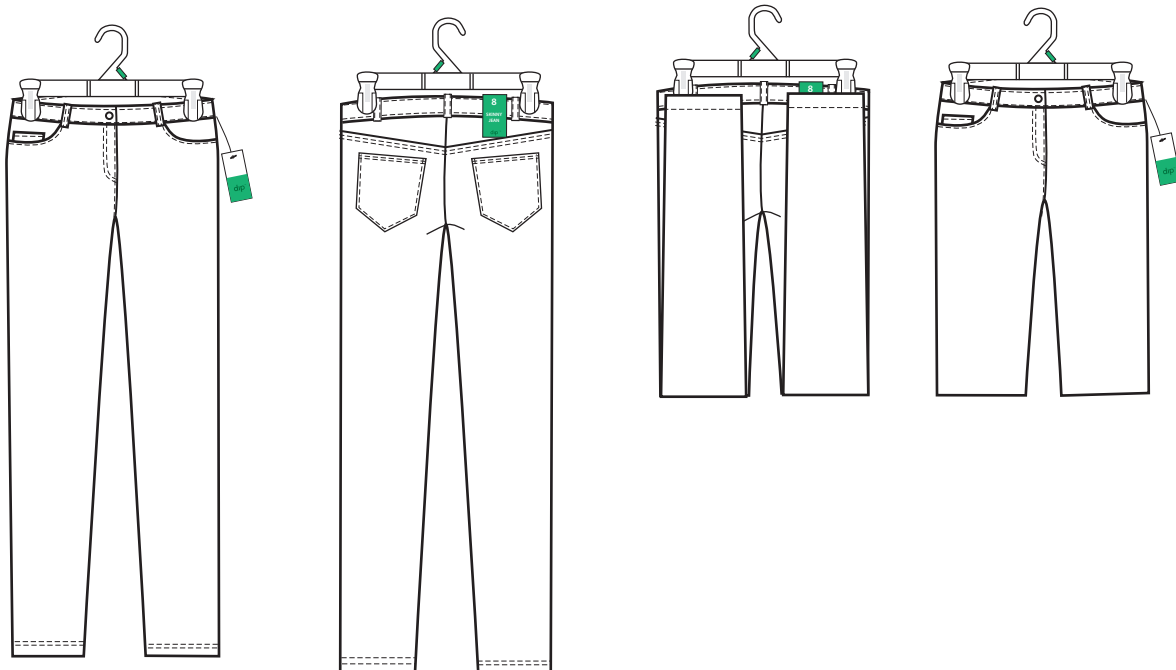
DRESSES

FOLD GARMENT IN HALF BEFORE ADDING TO CARTON



PANTS

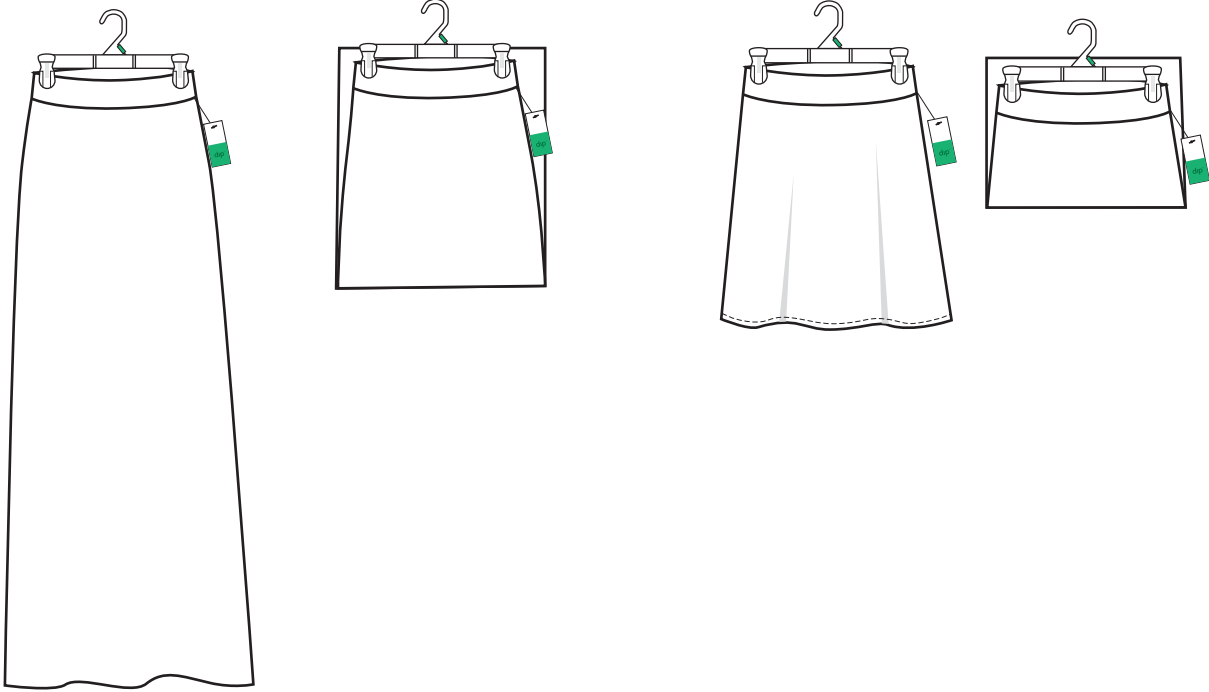
FOLD GARMENT IN HALF BEFORE ADDING TO CARTON



HANGING STYLES- PACKING

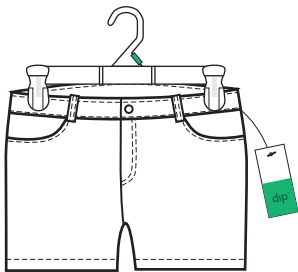
SKIRTS

FOLD GARMENT IN HALF BEFORE ADDING TO CARTON



SHORT SHORTS

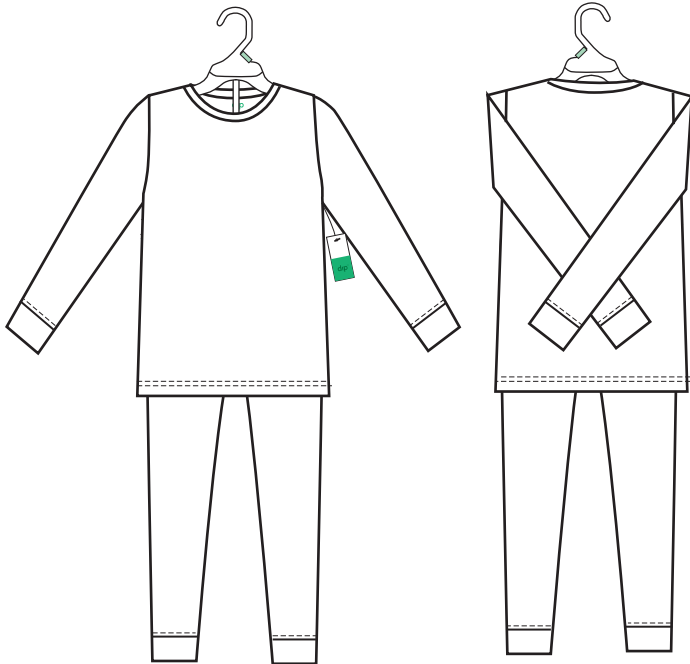
LAY FLAT IN CARTON



HANGING STYLES- PACKING

2 PIECE SETS

FOLD SLEEVES BACK AND FOLD GARMENT IN HALF BEFORE ADDING TO CARTON



LAY GARMENT FACE DOWN AND FOLD SLEEVES BACK OVER BODY



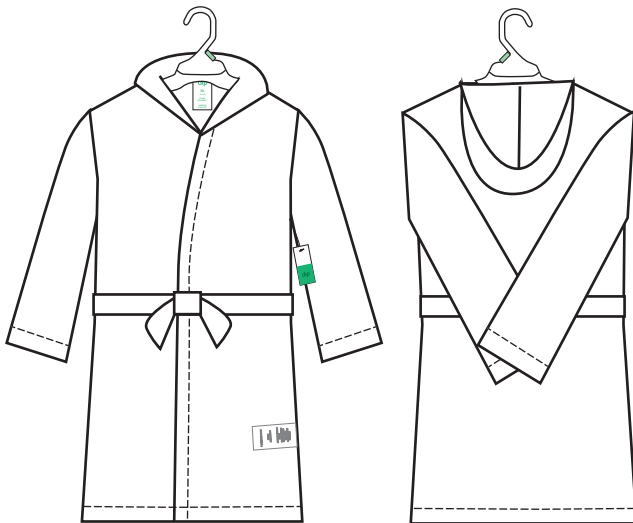
FOLD PANT UP SO GARMENT IS FOLDED IN HALF



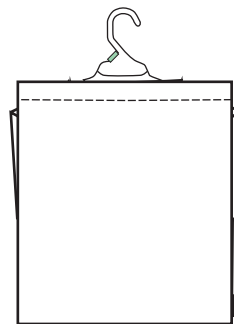
TURN GARMENT OVER TO BE FACE UP AND MAKE SURE HANGTAG IS VISIBLE

ROBES

FOLD SLEEVES BACK AND FOLD GARMENT IN HALF BEFORE ADDING TO CARTON



LAY GARMENT FACE DOWN AND FOLD SLEEVES BACK OVER BODY



FOLD HEM UP SO GARMENT IS FOLDED IN HALF



TURN GARMENT OVER TO BE FACE UP AND MAKE SURE HANGTAG IS VISIBLE

FOLDED TOPS & SWEATERS



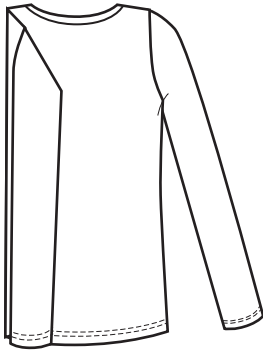
ADD SIZE STICKER TO FRONT OF GARMENT, IF REQUIRED



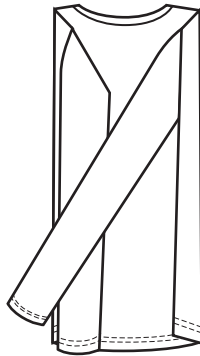
LAY GARMENT FACE DOWN



FOLD BODICE SIDE AND SLEEVE BACK OVER BODY



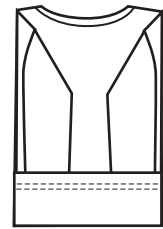
FOLD SLEEVE DOWN



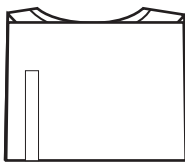
FOLD BODICE AND SLEEVE BACK OVER BODY



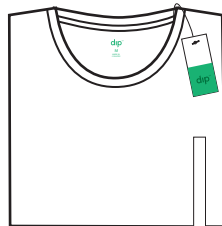
FOLD SLEEVE DOWN



FOLD HEM UP

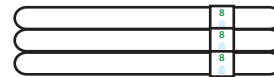


FOLD BOTTOM FOLDED EDGE UP TO MEET BACK NECK



TURN GARMENT TO BE FACE UP. MAKE SURE HANGTAG IS VISIBLE

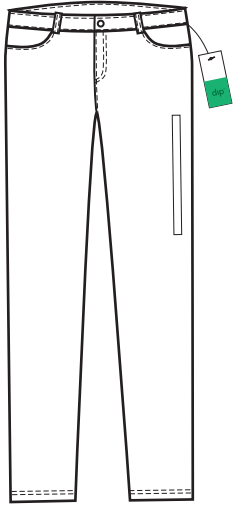
STACKED VIEW



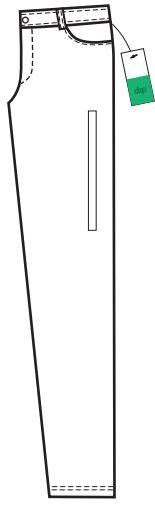
MAKE SURE STICKERS ARE VISIBLE WHEN STACKED

FOLDED BOTTOMS

FULL LENGTH & CROPPED STYLES



ADD SIZE STICKER TO FRONT OF LEG, IF REQUIRED



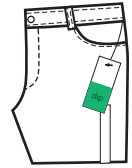
FOLD GARMENT IN HALF AT RISE



TURN GARMENT OVER AND FOLD LEG UP 1/3 OF THE WAY

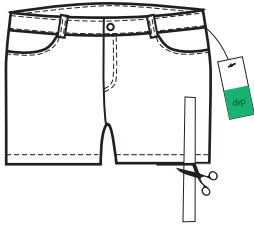


FOLD LEG REMAINING 1/3 OF THE WAY TO MEET WAISTBAND

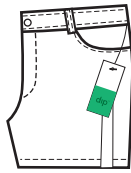


TURN GARMENT OVER, MAKE SURE HANG TAG IS VISIBLE

SHORT INSEAM STYLES

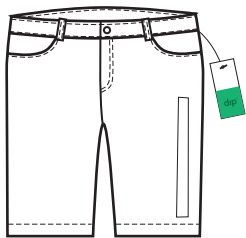


ADD SIZE STICKER TO FRONT OF LEG, IF INSEAM IS SHORTER THAN STICKER YOU MUST TRIM STICKER AT HEM



FOLD GARMENT IN HALF AT RISE

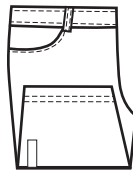
MID-THIGH & KNEE LENGTH INSEAM STYLES



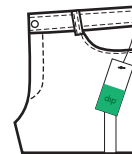
ADD SIZE STICKER TO FRONT OF LEG, IF REQUIRED



FOLD GARMENT IN HALF AT RISE

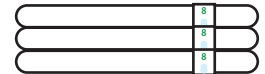


FOLD LEG UP



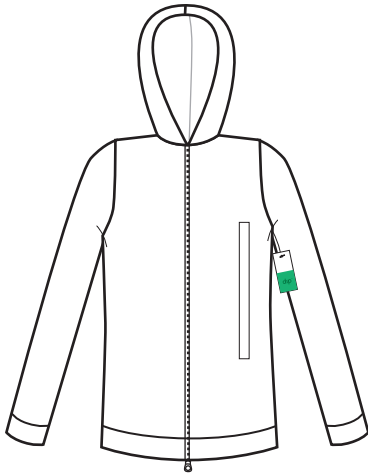
TURN GARMENT OVER, MAKE SURE HANG TAG IS VISIBLE

STACKED VIEW

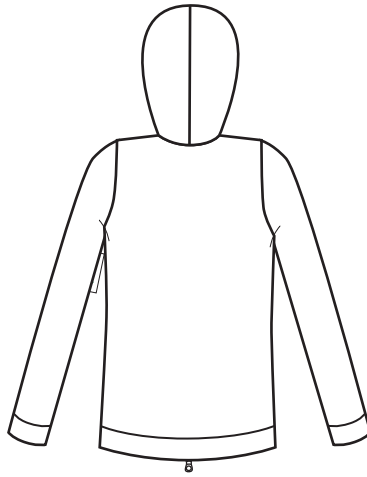


MAKE SURE STICKERS ARE VISIBLE WHEN STACKED

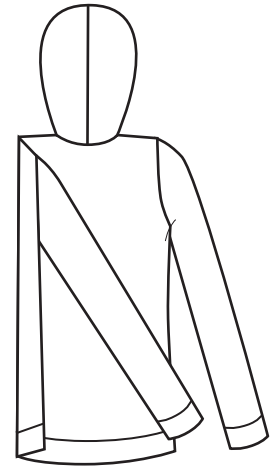
FOLDED HOODIES



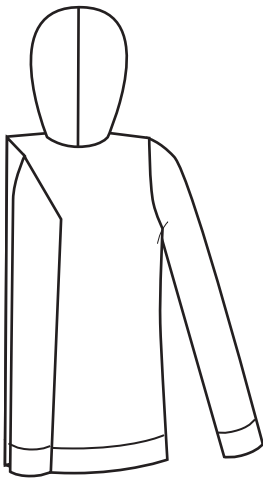
ADD SIZE STICKER TO FRONT OF GARMENT, IF REQUIRED



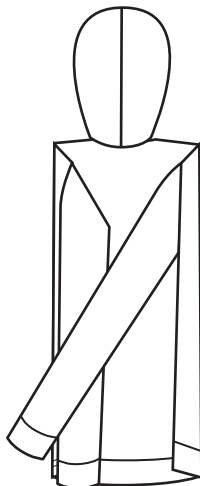
LAY GARMENT FACE DOWN



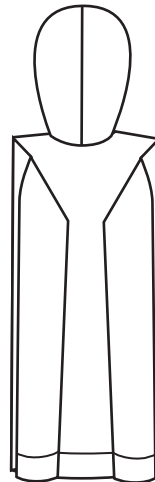
FOLD BODICE SIDE AND SLEEVE BACK OVER BODY



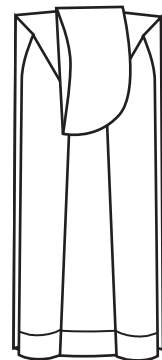
FOLD SLEEVE DOWN



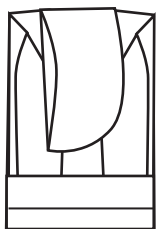
FOLD BODICE AND SLEEVE BACK OVER BODY



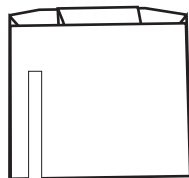
FOLD SLEEVE DOWN



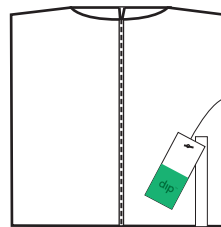
FOLD HOOD BACK OVER BACK BODICE



FOLD HEM UP

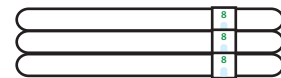


FOLD BOTTOM FOLDED EDGE UP TO MEET BACK NECK



TURN GARMENT TO BE FACE UP. MAKE SURE HANGTAG IS VISIBLE

STACKED VIEW



MAKE SURE STICKERS ARE VISIBLE WHEN STACKED

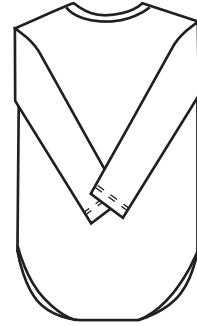
FOLDED ONESIE/BODYSUITS



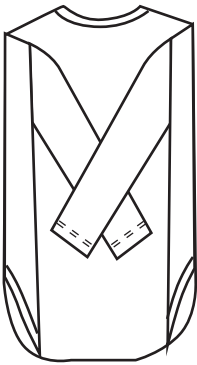
ADD SIZE STICKER TO FRONT OF GARMENT, IF REQUIRED



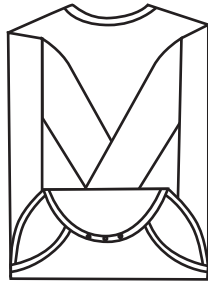
LAY GARMENT FACE DOWN



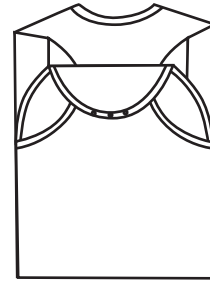
FOLD SLEEVE BACK OVER BODICE



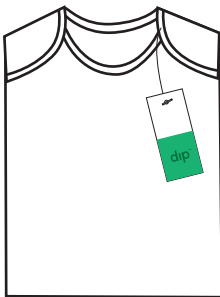
IF BODY WIDTH EXCEEDS FOLDED WIDTH DIMENSIONS, FOLD SIDES BACK OVER BODY



OR

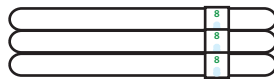


FOLD CROTCH BACK OVER BODY TO MEET REQUIRED FOLDED LENGTH DIMENSION



TURN GARMENT TO BE FACE UP. MAKE SURE HANGTAG IS VISIBLE

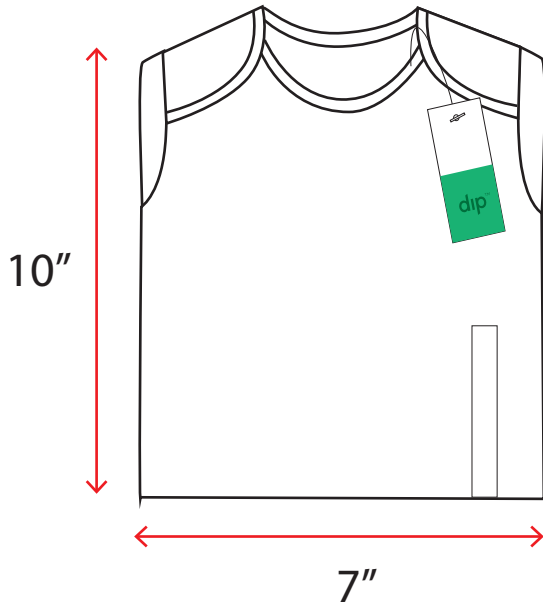
STACKED VIEW



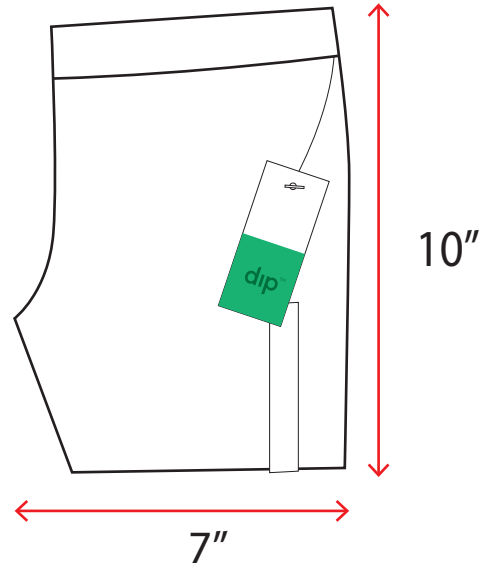
MAKE SURE STICKERS ARE VISIBLE WHEN STACKED

FOLDED DIMENSIONS- BABY

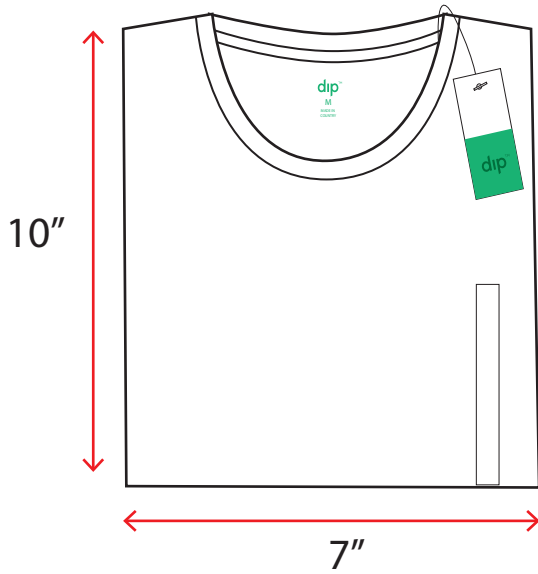
ONESIES



LEGGING & PANTS

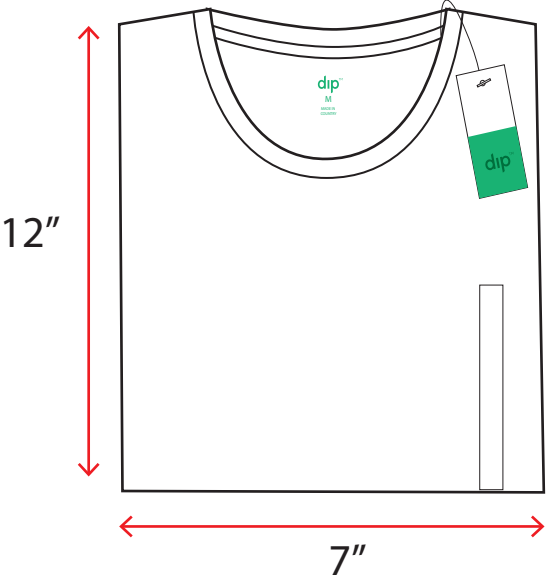


TEES & SWEATERS

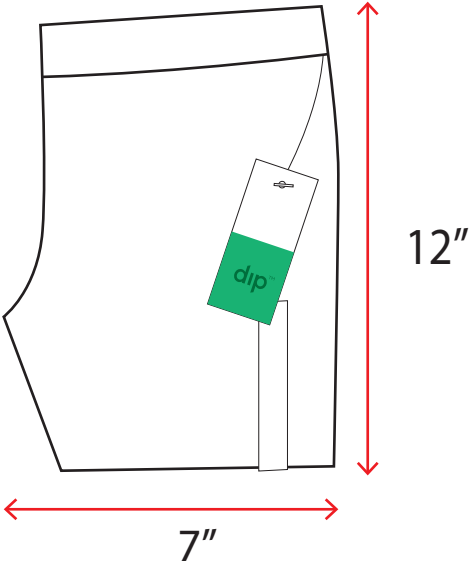


FOLDED DIMENSIONS- TODDLER & KIDS

TEES & SWEATERS

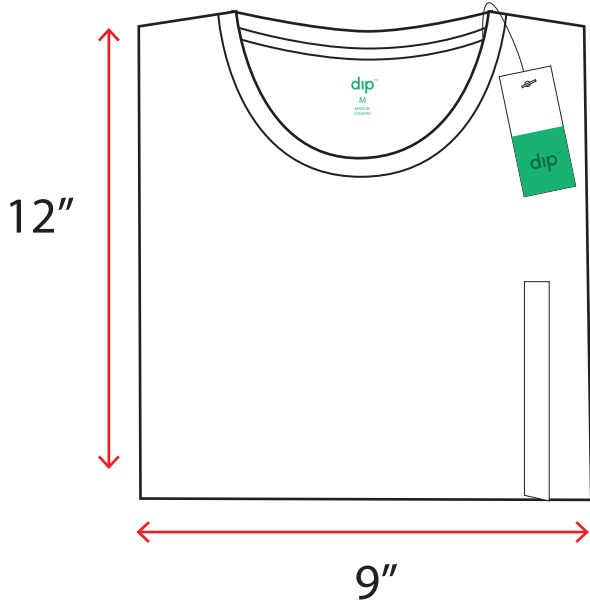


LEGGINGS & PANTS

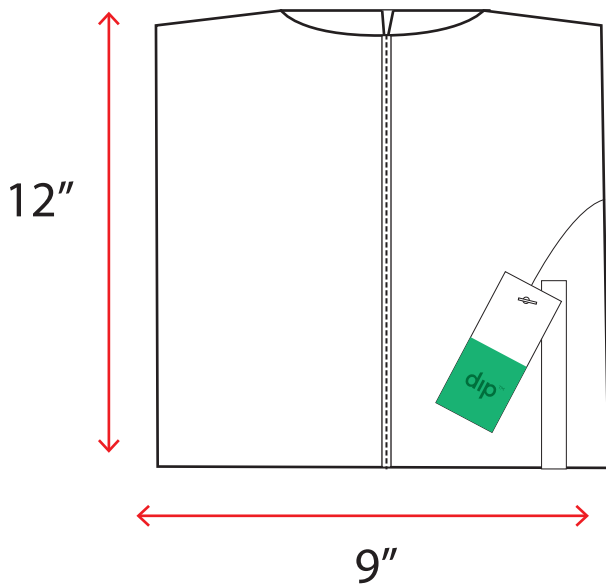


FOLDED DIMENSIONS- ADULTS

TEES, TOPS & SWEATERS



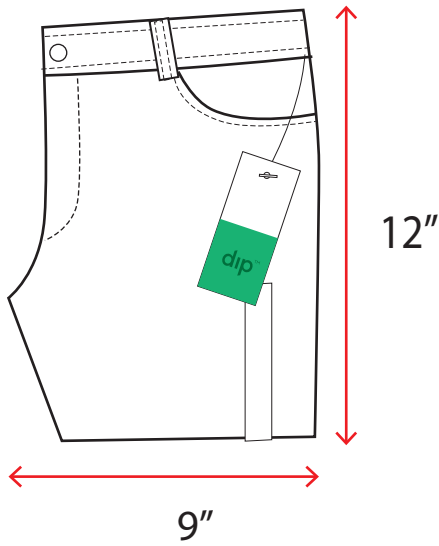
HOODIES



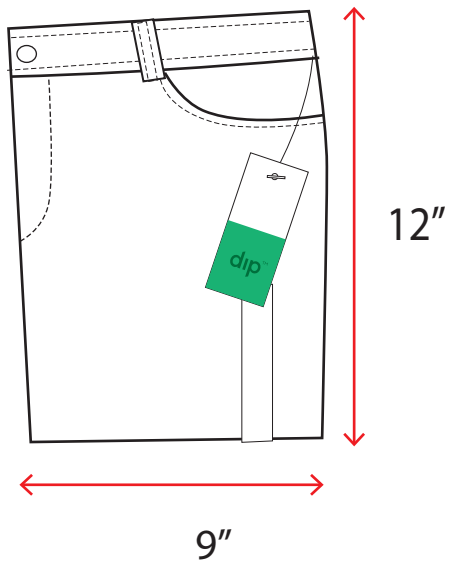
FOLDED DIMENSIONS- ADULTS

JEANS & PANTS

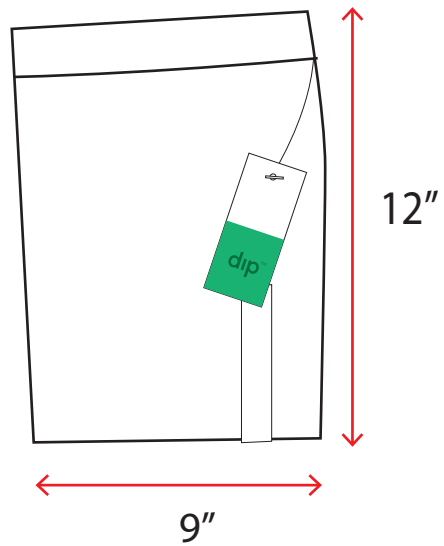
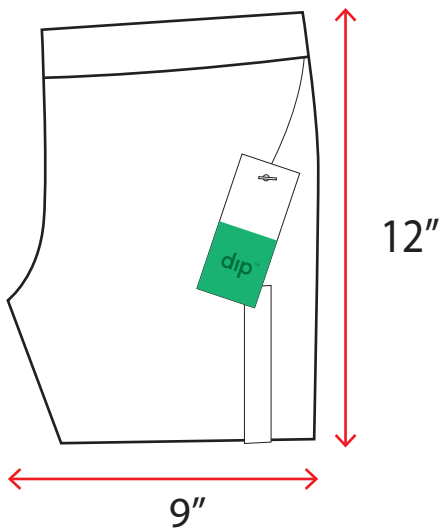
RISE OUT



RISE FOLDED IN



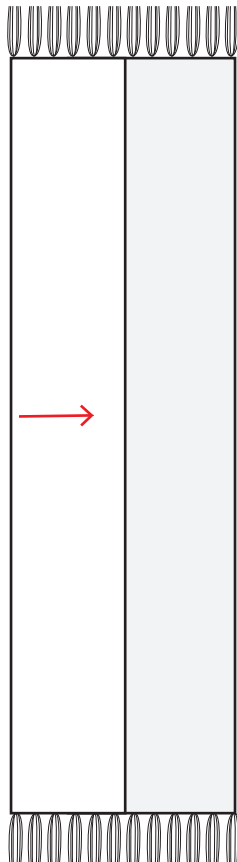
LEGGINGS



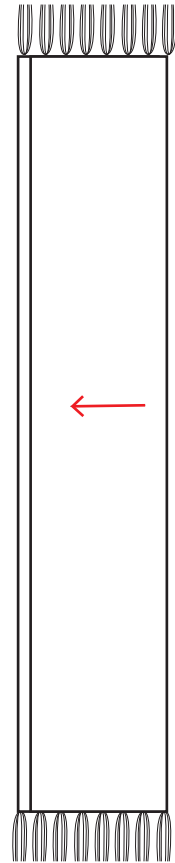
SCARF FOLDING



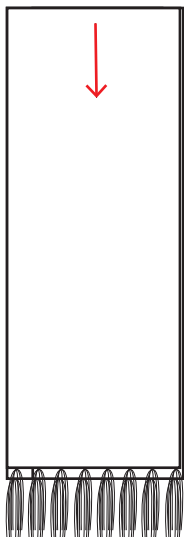
LAY SCARF FLAT, FACE DOWN



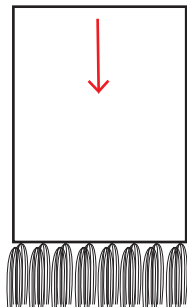
FOLD LEFT SIDE IN 1/3 OF WIDTH



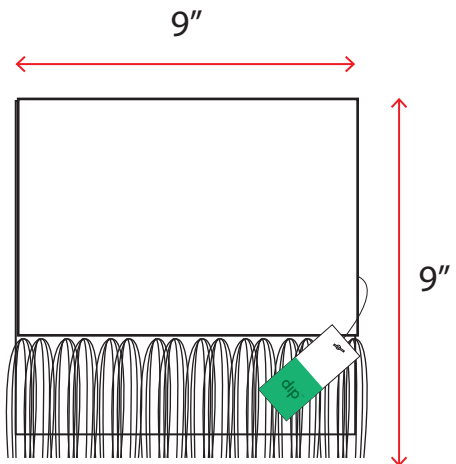
FOLD RIGHT SIDE IN 1/3 OF THE WIDTH



FOLD DOWN VERTICALLY IN HALF



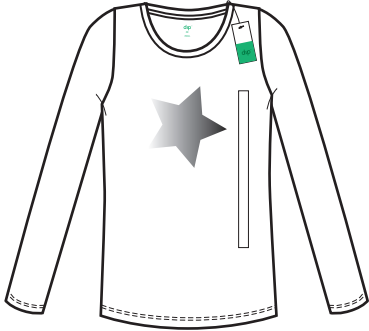
FOLD DOWN IN HALF TWO MORE TIMES TO MAKE A 9" X 9" FOLD WITH FRINGE SHOWING AT BOTTOM



TURN SCARF OVER, STRAIGHTEN FRINGE, AND PULL OUT HANGTAG TO LAY ON FRONT

TISSUE PAPER ADDITION

GARMENTS WITH PLASTISOL, FLOCKING OR GLITTER



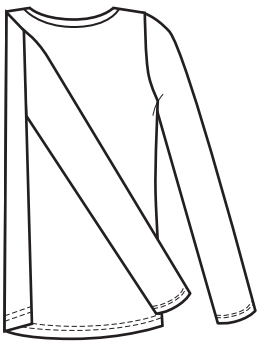
ADD SIZE STICKER TO FRONT OF GARMENT, IF REQUIRED



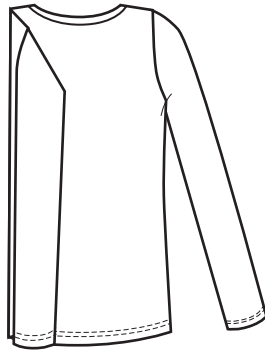
ADD TISSUE PAPER SHEET TO COVER GRAPHIC



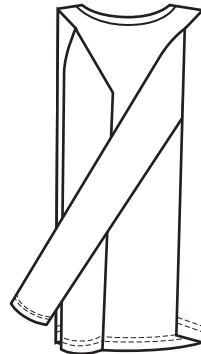
LAY GARMENT FACE DOWN



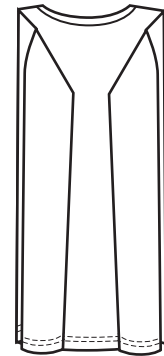
FOLD BODICE SIDE AND SLEEVE BACK OVER BODY



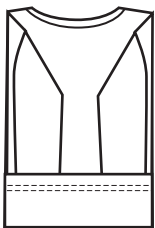
FOLD SLEEVE DOWN



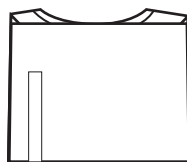
FOLD BODICE AND SLEEVE BACK OVER BODY



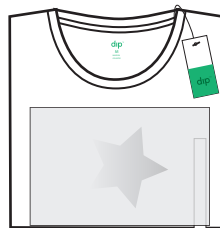
FOLD SLEEVE DOWN



FOLD HEM UP

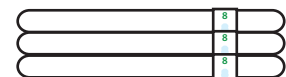


FOLD BOTTOM FOLDED EDGE UP TO MEET BACK NECK



TURN GARMENT TO BE FACE UP. MAKE SURE HANGTAG IS VISIBLE

STACKED VIEW



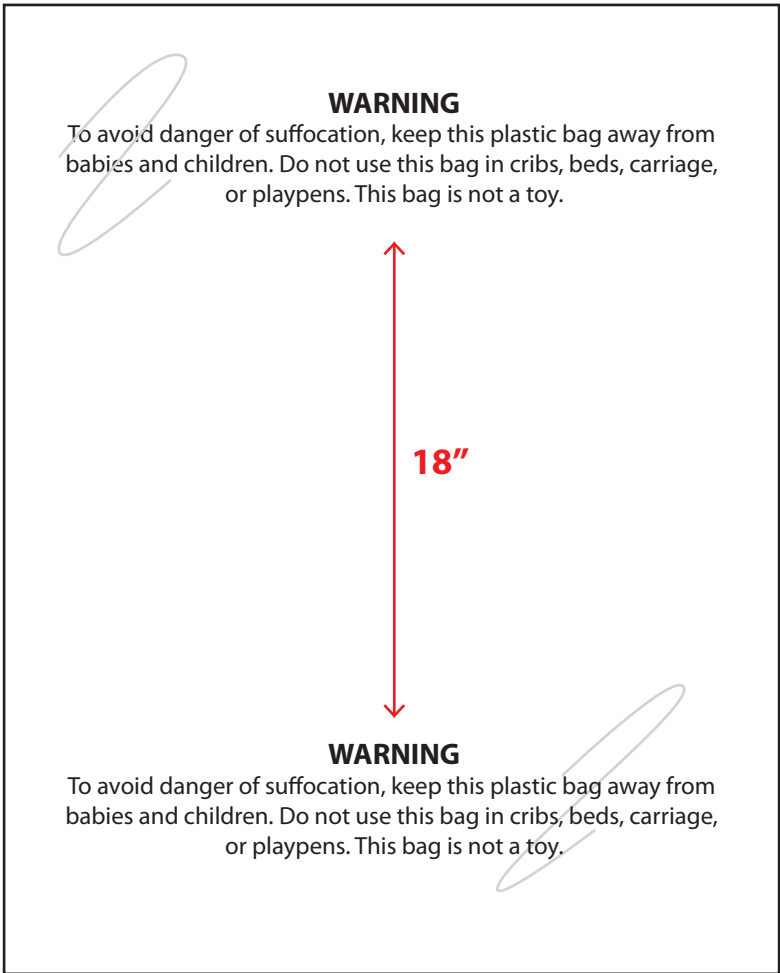
MAKE SURE STICKERS ARE VISIBLE WHEN STACKED

PRE-PACK/STORE PACK POLYBAGS

IT IS REQUIRED TO ADD THE BELOW WARNING INFORMATION IN A CLEAR, DISTINCT AND CONSPICUOUS COLOR, LAYOUT AND CONTRAST. THE WARNING SHALL BE ON THE BAG OR ON LABEL SECURELY ATTACHED TO THE BAG. THE WARNING LABEL SHALL BE REPEATED EVERY 18" ON THE PLASTIC BAG.

WARNING

To avoid danger of suffocation, keep this plastic bag away from babies and children. Do not use this bag in cribs, beds, carriage, or playpens. This bag is not a toy.



THE MINIMUM SIZE TYPE VARIES BASED ON THE SIZE OF THE PLASTIC BAG AS INDICATED BELOW. THE FOLLOWING SATISFIES ALL STATE AND LOCAL REQUIREMENTS EXCEPT FOR GERING, NE WHICH REQUIRES 1/4" IN TYPE SIZE. TOTAL LENGTH AND WIDTH OF BAG COMBINED.

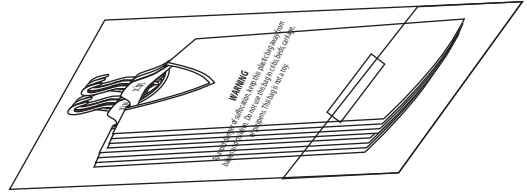
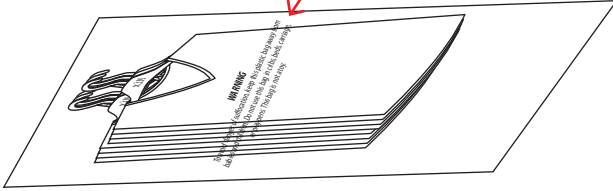
BAG SIZE	MINIMUM TYPE SIZE
<25"	10 POINT
25" TO 39"	14 POINT
40" TO 59"	18 POINT
60" OR OVER	24 POINT

PLEASE NOTE: PRE-PACKS/STORE PACKS ARE ONLY NEEDED FOR VERY LIGHTWEIGHT GARMENTS WHERE THE PRE-PACK WEIGHT PLUS CARTON WEIGHT WILL BE LESS THAN 2 LBS

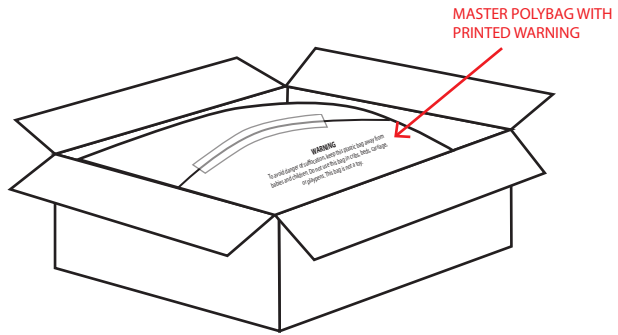
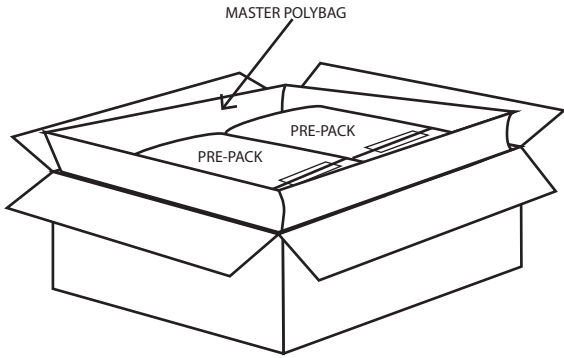
THE NUMBER OF GARMENTS TO BE IN EACH PRE-PACK IS GIVEN TO YOU BY FRED MEYER

PRE-PACKS/STORE PACKS

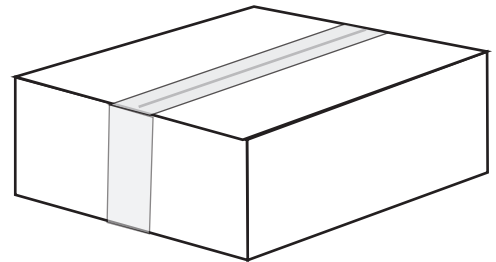
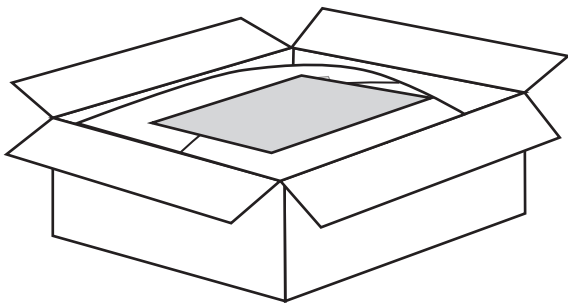
PRE-PACK POLYBAG WITH PRINTED WARNING



ADD REQUIRED NUMBER OF GARMENTS INTO PRE-PACK POLYBAG AND TAPE BOTTOM CLOSED

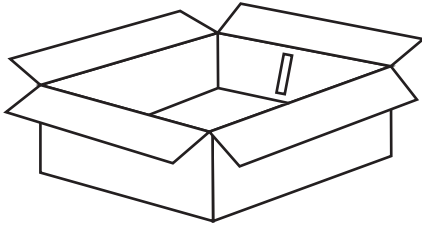


ADD PRE-PACK POLYBAGS INTO CARTON WITH MASTER POLYBAG. CLOSE MASTER POLYBAG AND TAPE CLOSED.

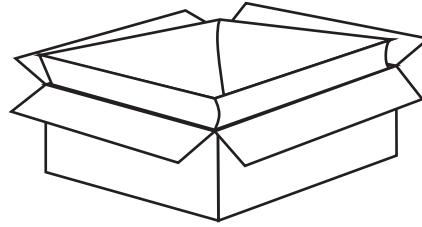


ADD CARDBOARD PIECE ON TOP OF BAG AND TAPE CARTON CLOSED.

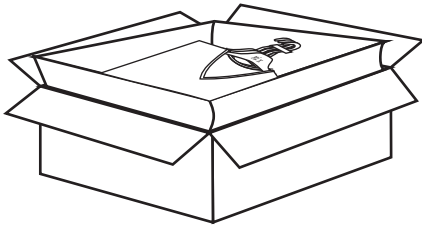
STANDARD CARTON PACKING



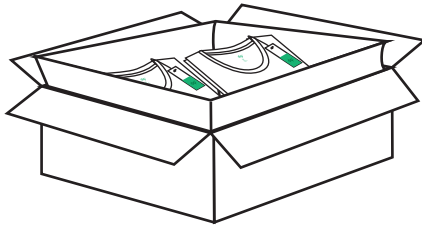
ADD ELASTIC LOOP TO SIDE OF CARTON (HANGING STYLES ONLY)



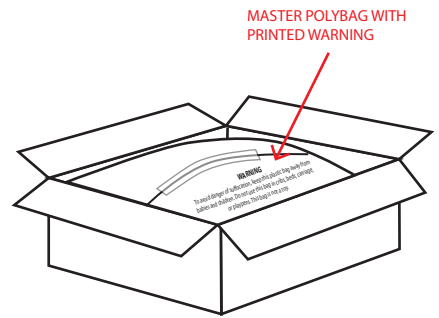
ADD LARGE MASTER POLYBAG TO CARTON



FOR HANGER PACKED- ADD GARMENTS TO CARTON ALTERNATING HANGERS ON EACH SIDE



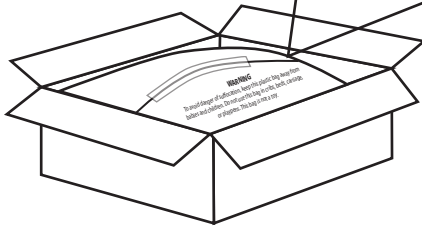
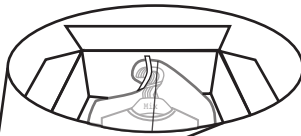
FOR FOLDED- ADD STACKED GARMENTS TO CARTON



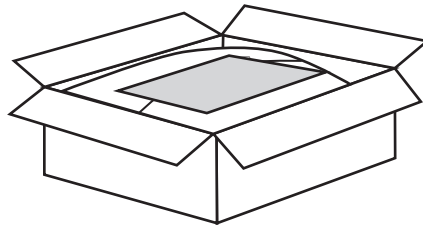
MASTER POLYBAG WITH PRINTED WARNING

CLOSE MASTER POLYBAG AND TAPE TOP CLOSED

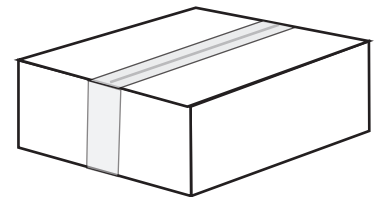
Inside View



FOR HANGER PACKED- HOOK HANGERS INTO ELASTIC LOOP ON SIDE OF CARTON



ADD SMALL CARDBOARD TO TOP OF POLYBAG



CLOSE CARTON AND TAPE CLOSE